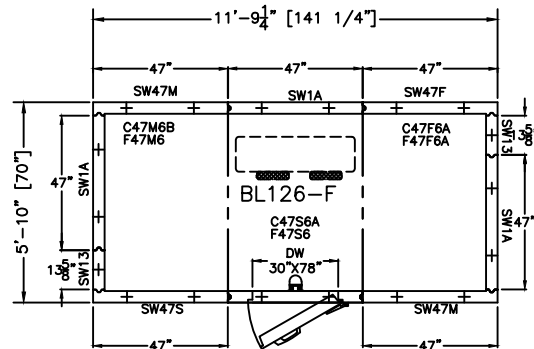


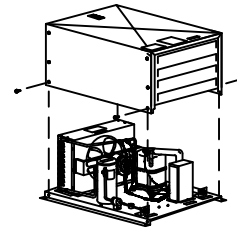
MODEL: BL126F-R

FREEZER -10°

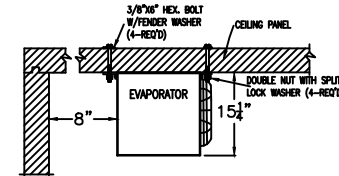
REMOTE PRE-ASSEMBLED REFRIGERATION



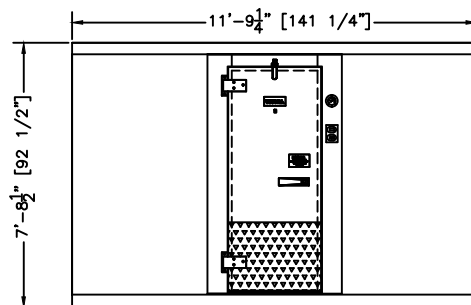
PLAN VIEW



CONDENSING UNIT
DETAIL

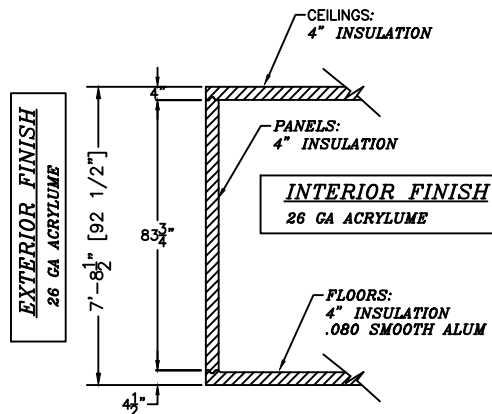


EVAPORATOR MOUNTING
DETAIL



ELEVATION

SHOWN W/ RIGHT HINGE
(LEFT HINGE AVAILABLE)



SECTION WALL WITH FLOOR

SCALE: 1/4"=1'-0"

PRODUCT SPECIFICATIONS	
MODEL:	BL126F-R
INTERIOR/EXTERIOR FINISH	MILL EMB. ACRYLUME
INTERIOR FLOOR FINISH	SMOOTH ALUMINUM
COMPT ELECTRICAL (VOLTS/Hz/PH)	115/60/1
COMPT AMP.	2.0 Amp
REFRIG. SYSTEM ELECT (VOLTS/Hz/PH)	208-230/60/1
REFRIG. SYSTEM CONDENSING UNIT AMP.	35.0 Amp
REFRIG. SYSTEM EVAPORATOR UNIT AMP.	1.8 Amp
REFRIG. SYSTEM WEIGHT.	230 Lbs
TOTAL SHIP WGT APPROX. (2 PALLETS)	1506 Lbs
TOTAL SHIP CUBIC FEET APPROX.	261 CuFt



Energy
Independence
& Security Act

Arctic
WALK-IN COOLERS AND FREEZERS
BY ARCTIC INDUSTRIES INC.
9731 N.W. 114th BOV MIAMI, FLORIDA 33178
PHONE: (305) 883-5881

GENERAL NOTE
NOTICE TO GENERAL CONTRACTOR
AND SUB-CONTRACTOR. UNIT
QUARRY TILE OR CONCRETE
WEARING FLOORS, THE METAL
FACINGS MAY BE SUS-CEPTIBLE
TO STAINING DUE TO EXCESSIVE
MOISTURE CREATED BY HYDRATION
OF CONCRETE-TYPE
MATERIALS. IT IS ESSENTIAL THAT
EACH ROOM BE PROPERLY
VENTILETED. SPECIAL PRECAUTIONS
MUST BE TAKEN WHEN USING
MURIATIC ACID DUE TO EFFECTS OF
ACID FUMES ON ALUMINUM AND
STAINLESS STEEL.
IN ADDITION, METAL SURFACES
MUST BE PROTECTED FROM LIME
AND OTHER CHEMICALS FOUND IN
CONCRETE BY-PRODUCTS.
PETROLEUM BASED PROTECTION
MUST BE APPLIED BETWEEN
CONCRETE AND THE METAL
SURFACES. (LIQUID TAR, BRUSHED
OR SPRAYED ABOVE THE CONCRETE
CONTACT LINE, HEAVY EPOXY PAINT,
8 MIL POLYETHYLENE H.D. BLACK
DOUBLE LAYERED, 30 LB. ASPHALT
IMPREGNATED ROOFING PAPER).

CONSTRUCTION

N.S.F. CONSTRUCTION

Project Name:
ARCTIC INDUSTRIES, INC
BLUE LINE

P.O.#:

APPLICATION:
MODEL: BL126F-R

NOTES:

FLOOR MUST BE LEVEL SMOOTH
AND CLEAR OF OBSTRUCTIONS TO
ACCEPT WALK-IN PANELS. ALSO,
THERE MUST BE A MINIMUM OF 2"
CLEARANCE AROUND ALL SIDES OF
THE WALK-IN UNIT PROPER
CIRCULATION.

VERIFY ALL DIMENSIONS AND
SPECIFICATIONS BEFORE
APPROVING DRAWINGS

IMPORTANT: ALLOW 2 FEET
CLEARANCE ABOVE UNIT TO REMOVE
TOP PANEL AND TO ALLOW SERVICE
ACCESS.

STRUCTURE MUST BE NOT MASKED
TO BUILDING CEILING, BLOCKING AIR
FLOW TO UNIT.

SIGNED APPROVED PRINT
MUST BE REC'D. B/4 FAB.

☐ APPROVED AS DRAWN

SIGNED: _____

DATE: _____

Drawn By: R.P.UPO
Scale: NOT TO SCALE
Checked By: ARCTIC
CREATED: 2014

DRW No:

BL126F-R