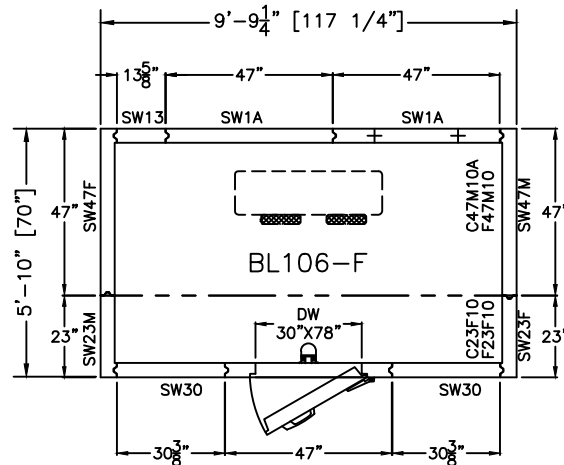


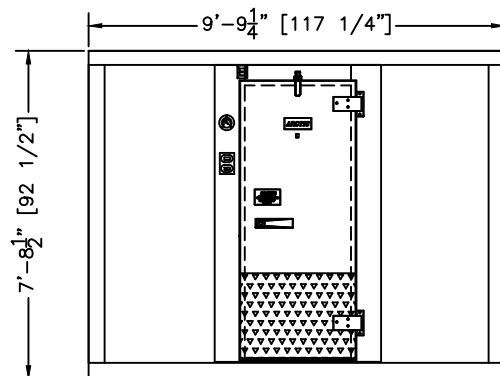
MODEL: BL106F-R

FREEZER -10°

# REMOTE PRE-ASSEMBLED REFRIGERATION

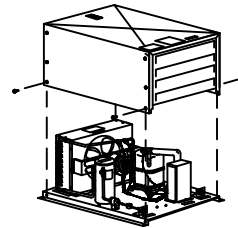


PLAN VIEW

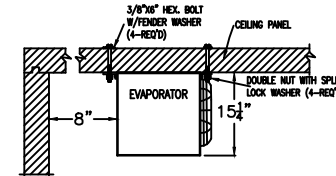


ELEVATION

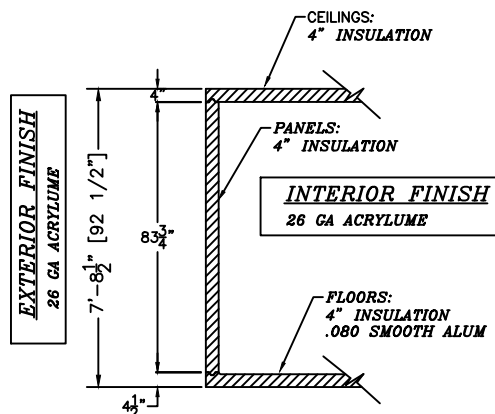
SHOWN W/ RIGHT HINGE  
(LEFT HINGE AVAILABLE)



CONDENSING UNIT  
DETAIL



EVAPORATOR MOUNTING  
DETAIL



SECTION WALL WITH FLOOR

SCALE: 1/4"=1'-0"

PRODUCT SPECIFICATIONS	
MODEL:	BL106F-R
INTERIOR/EXTERIOR FINISH	MILL EMB. ACRYLUME
INTERIOR FLOOR FINISH	SMOOTH ALUMINUM
COMPT ELECTRICAL (VOLTS/Hz/PH)	115/60/1
COMPT AMP.	2.0 Amp
REFRIG. SYSTEM ELECT (VOLTS/Hz/PH)	208-230/60/1
REFRIG. SYSTEM CONDENSING UNIT AMP.	32.2 Amp
REFRIG. SYSTEM EVAPORATOR UNIT AMP.	0.9 Amp
REFRIG. SYSTEM WEIGHT.	219 Lbs
TOTAL SHIP WGT APPROX. (2 PALLETS)	1506 Lbs
TOTAL SHIP CUBIC FEET APPROX.	261 CuFt



Energy  
Independence  
& Security Act

**Arctic**  
WALK-IN COOLERS AND FREEZERS  
BY ARCTIC INDUSTRIES INC.  
9731 N.E. 114th BLVD MIAMI FLORIDA 33178  
PHONE: (305) 883-5881

GENERAL NOTE  
NOTICE TO GENERAL CONTRACTOR  
AND SUB-CONTRACTOR. UNIT  
QUARRY TILE OR CONCRETE  
WEARING FLOORS, THE METAL  
FACINGS MAY BE SUS-CEPTIBLE  
TO STAINING DUE TO EXCESSIVE  
MOISTURE CREATED BY HYDRATION  
OF CONCRETE-TYPE  
MATERIALS. IT IS ESSENTIAL THAT  
EACH ROOM BE PROPERLY  
VENTILETED. SPECIAL PRECAUTIONS  
MUST BE TAKEN WHEN USING  
MURIATIC ACID DUE TO EFFECTS OF  
ACID FUMES ON ALUMINUM AND  
STAINLESS STEEL.  
IN ADDITION, METAL SURFACES  
MUST BE PROTECTED FROM LIME  
AND OTHER CHEMICALS FOUND IN  
CONCRETE BY-PRODUCTS.  
PETROLEUM BASED PROTECTION  
MUST BE APPLIED BETWEEN  
CONCRETE AND THE METAL  
SURFACES. (LIQUID TAR, BRUSHED  
OR SPRAYED ABOVE THE CONCRETE  
CONTACT LINE, HEAVY EPOXY PAINT,  
8 MIL POLYETHYLENE H.D. BLACK  
DOUBLE LAYERED, 30 LB. ASPHALT  
IMPERMEATED ROOFING PAPER).

## CONSTRUCTION

N.S.F. CONSTRUCTION

Project Name:  
ARCTIC INDUSTRIES, INC  
BLUE LINE

P.O#:

APPLICATION:  
MODEL: BL106F-R

## NOTES:

FLOOR MUST BE LEVEL SMOOTH  
AND CLEAR OF OBSTRUCTIONS TO  
ACCEPT WALK-IN PANELS. ALSO,  
THERE MUST BE A MINIMUM OF 2"  
CLEARANCE AROUND ALL SIDES OF  
THE WALK-IN UNIT PROPER  
CIRCULATION.

VERIFY ALL DIMENSIONS AND  
SPECIFICATIONS BEUNITE  
APPROVING DRAWINGS

IMPORTANT: ALLOW 2 FEET  
CLEARANCE ABOVE UNIT TO REMOVE  
TOP PANEL AND TO ALLOW SERVICE  
ACCESS.

STRUCTURE MUST BE NOT MASKED  
TO BUILDING CEILING, BLOCKING AIR  
FLOW TO UNIT.

SIGNED APPROVED PRINT  
MUST BE REC'D. B/4 FAB.

☐ APPROVED AS DRAWN

SIGNED \_\_\_\_\_

DATE: \_\_\_\_\_

Drawn By: R.PUPO  
Scale: NOT TO SCALE  
Checked By: ARCTIC  
CREATED: 2014

DRW No:

BL106F-R